

Hitachi 5005SC-H

Specifications

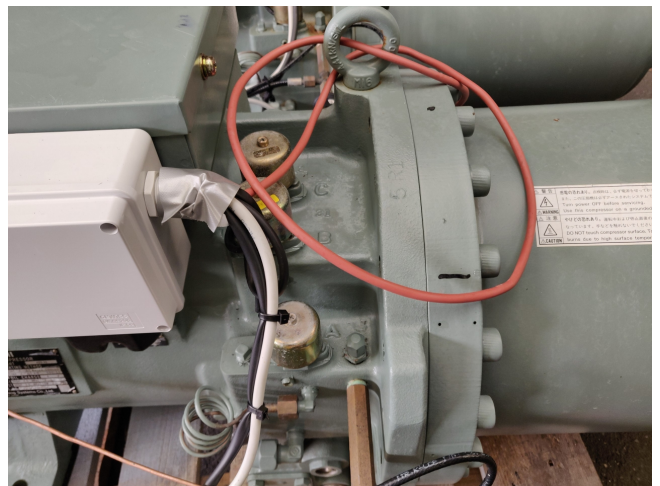
Brand	Hitachi
Type	5005SC-H
Refrigerant	Freon
kW at +10°C/+40°C	196.9
Electromotor Specs	37 kW
Unloaded Start	✓
Capacity Control	✓
Pressure safety switches	✓
Hp/Lp/Op	
m3 / h	204.2
Weight in kg.	420 kg
Sizes	1209x455x591 mm (LxWxH)
Stock	2

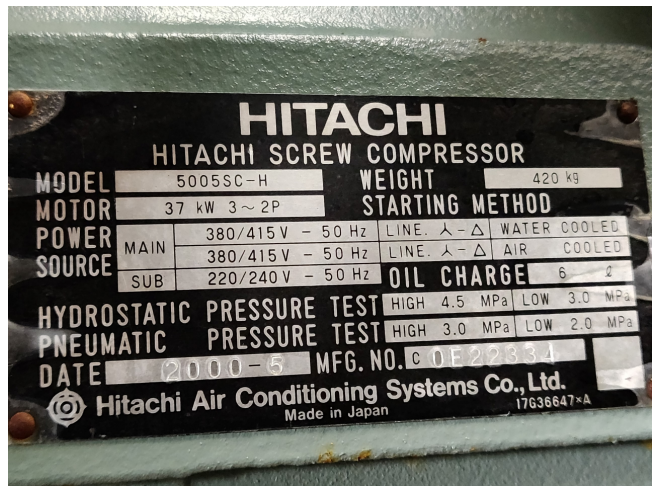
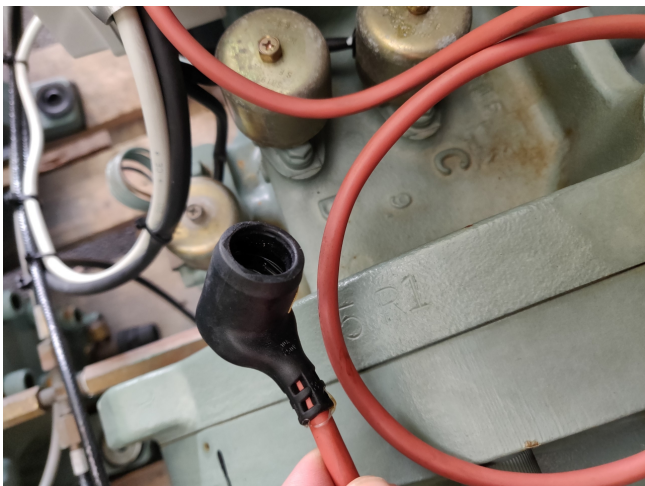
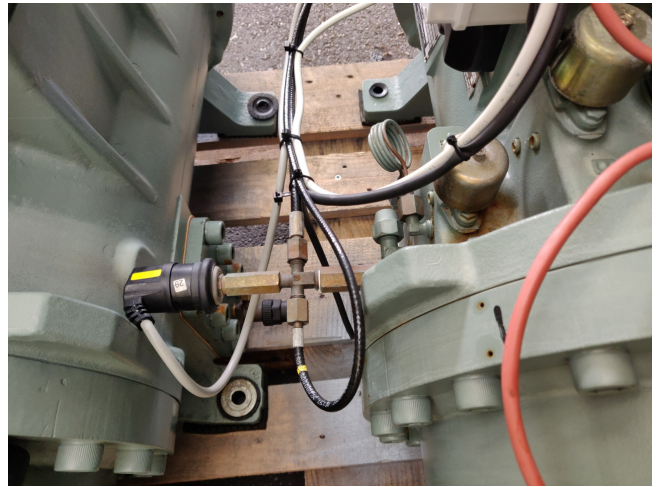
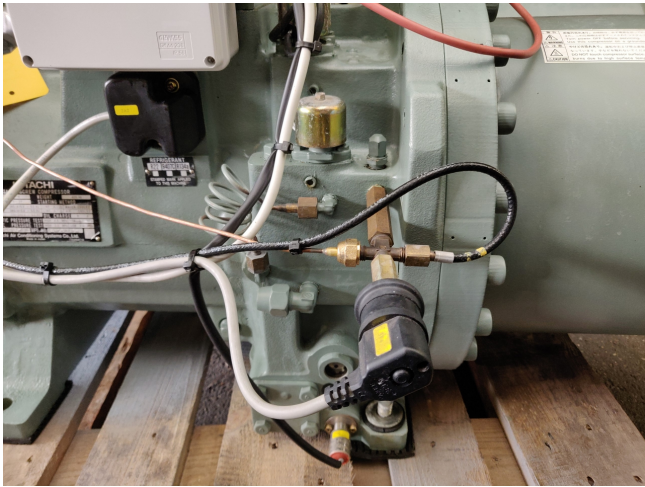


Description

Used Hitachi 5005SC-H

Used Hitachi 5005SC-H Screw Compressor. this compressor has two types of cooling methods Main 380/415V- 50Hz / Line Water Cooled / Air Cooled // Hydrostatic Pressure Test : High 4.5 MPa / Low 3.0 MPa. *Why choose for HOSBV? Were not only the largest used refrigeration specialist in Europe, but also, we deliver all equipment including an extensive test, warranty and industrial cleaning. *Optional we can also perform a new paint job and arrange the logistics.







GENERAL PRODUCT INFORMATION

Model		4005SC-Z	5005SC-Z	6005SC-Z	10001SC-Z
Cooling Capacity (R22)	kW	159.6	196.9	242.6	405.0
	(kcal/h) Btu/h	(137,200) 544,200	(169,300) 671,700	(208,600) 827,700	(348,200) 1,381,600
Motor Input	kW	39.0	48.0	59.5	84.3
Overall Dimension	Height	566 (22-1/4)	591 (23-1/4)	591 (23-1/4)	698 (27-1/2)
	Width	413 (16-1/4)	455 (17-7/8)	455 (17-7/8)	724 (28-1/2)
	Length	1123 (45)	1209 (47-1/4)	1239 (48-3/8)	1537 (60-1/2)
Net Weight	kg (lb)	360 (795)	420 (925)	440 (970)	825 (1819)
Displacement	m ³ /h (cfm)	165.6 (97.5)	204.2 (120.2)	251.5 (148.0)	395.0 (232.5)
Piping connections	Suction Piping O.D.	53.98 (2-1/8)	53.98 (2-1/8)	53.98 (2-1/8)	92.08 (3-5/8)
	Discharge Piping O.D.	34.92 (1-3/8)	41.28 (1-5/8)	41.28 (1-5/8)	66.68 (2-5/8)

Notes:

- The compressors are driven by two pole motors directly mounted on the compressor shaft, and with a rotation of 3,470 rpm for 60 Hz, at the rated voltage.
- Refrigerants R22, R407C and R134a are applicable to these compressors. Continue to use with only one refrigerant that is chosen at the installation.
- Castrol Icematic® SW220HT Oil is charged in these compressors at the time of shipment.
- Capacity control is applicable down to 25% (33% for model 4005SC-Z) of the rated capacity.
- The standard color is light green (Munsell Code 10G5.2).
- The cooling capacity and the motor input are based on the following conditions:
 Condensing Temperature: 40.6 °C (105° F)
 Leaving Liquid Temperature: 40.6 °C (105° F)
 Evaporating Temperature: 4.4 °C (40° F)
 Suction Gas Temperature to compressor: 12.8 °C (55° F)
- The U.S. dimensions shown here are converted from metric.
- These compressors should be install indoors or in a location equivalent to an indoor environment.

Caution:

UL approval for the 100hp (model: 10001SC-Z) is for 460 V - 60Hz only. The 230/208 V-60Hz UL approval has not been obtained.

Due to continuing improvements, specifications are subject to change. Please consult AC Component Specialists, Inc.